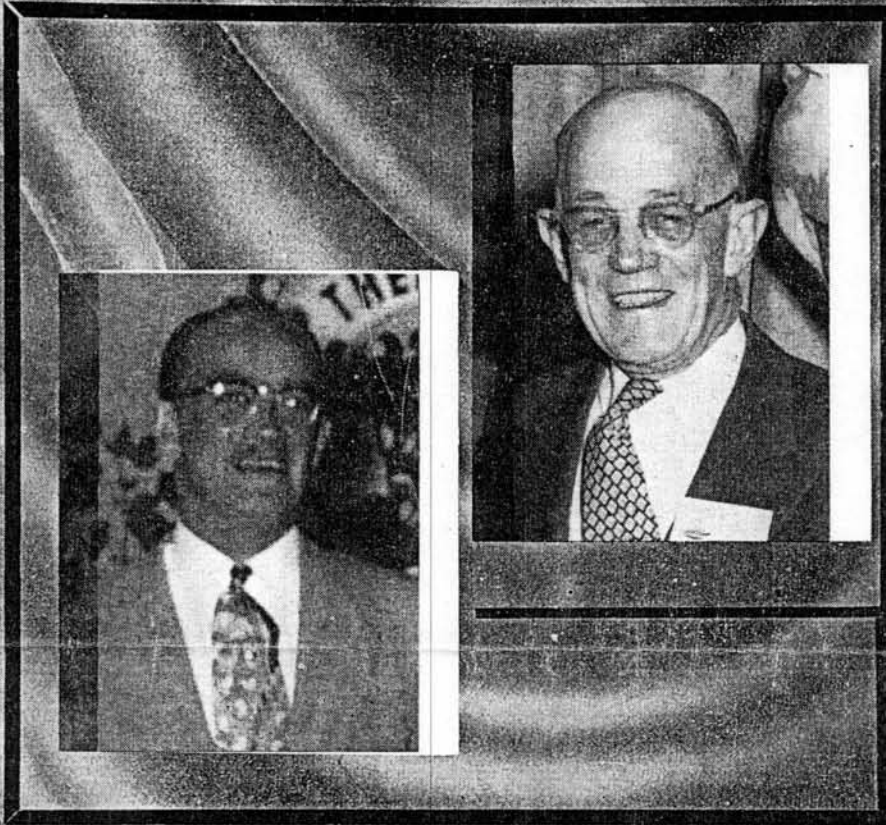


# 1932-1956

Shepherd Boats Limited was organized in 1931 at St. Catharines, Ontario by Lloyd H. Shepherd and his son, Mr. Howard Shepherd. They originally began by building outboard boats. Fire destroyed their premises in 1940 and a new building was started the same year at the mouth of the Niagara River. The "Southwind" a 65-foot sailboat was the first boat to be built on the new premises.

After building Airforce patrol boats during the war they began the manufacture of a line of deluxe runabouts and cruisers, and by 1956 they were shipping them to the United States market. Shepherd boats have been singularly successful in the United States with much of the company's production being sold there.



Left  
**LLOYD H. SHEPHERD**  
*President*

Far Left  
**HOWARD SHEPHERD**  
*Plant Superintendent*

# SHEPHERD BOATS LTD.

NIAGARA-ON-THE-LAKE • ONTARIO • CANADA

## Introducing our 1956 Models

### Shepherd 24 ft. Hardtop

Beam 8' 4", freeboard 36½" and 25". Double planked mahogany bottom. Seats 8 to 15. Vee drive. Power: single 200 hp. or twin 105 hp. or 125 hp. engines. Speeds to 43 m.p.h.

### Shepherd 22 ft. Convertible

Shown with top up. Shepherd boats have greater bow buoyancy because centre of gravity is further aft. Boats ride better.

### Shepherd 22 ft. Convertible

Shown with top down. Beam 7' 5". Double planked mahogany bottom. Seats 8, with ¾ seat. Vee drive. Power: 125 or 200 hp. engine. Speeds to 42 m.p.h.

### Shepherd 18 ft. Super Sportsman

Beam 6' 4". Double ¾" planked mahogany bottom. Direct drive. Seats 5. Powered by Chrysler V8, 200 hp. engine. Speeds up to 57 m.p.h. can be obtained.

### Shepherd Junior Outboard

Two toned painted sides with varnished deck. Also available with two toned varnish finish. Length 15' 6", beam 6' 4", moulded depth 34". Mahogany deck. Seats 5.

### Shepherd 22 ft. Sedan Hardtop

Beam 7' 5". Double ¾" planked mahogany bottom. Vee drive. Choice of power units. Seats 8.

### Shepherd 27 ft. Commuter Convertible

Shown with top down. Beam 9' 4". Double ½" planked bottom. Sleeps 2-4 people, or seats 10. Power: Twin 125 or 200 hp. engines. Speeds to 43 m.p.h.

### Shepherd 27 ft. Commuter Convertible

Shown with top up. These models can be obtained in natural mahogany finish or expertly painted white, blue or green. Contrast of the painted sides with handsome mahogany finished deck, produces a strikingly beautiful effect.

**SHEPHERD**  
NIAGARA-ON-THE-

**BOATS LTD.**  
LAKE, ONTARIO

