

# SHEPHERD *'68*

 *Shepherd* **BOATS LTD.**  
a wholly owned subsidiary of Trojan Boat Co.

NIAGARA-ON-THE-LAKE

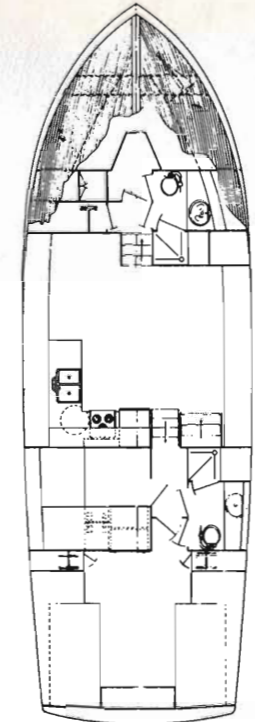
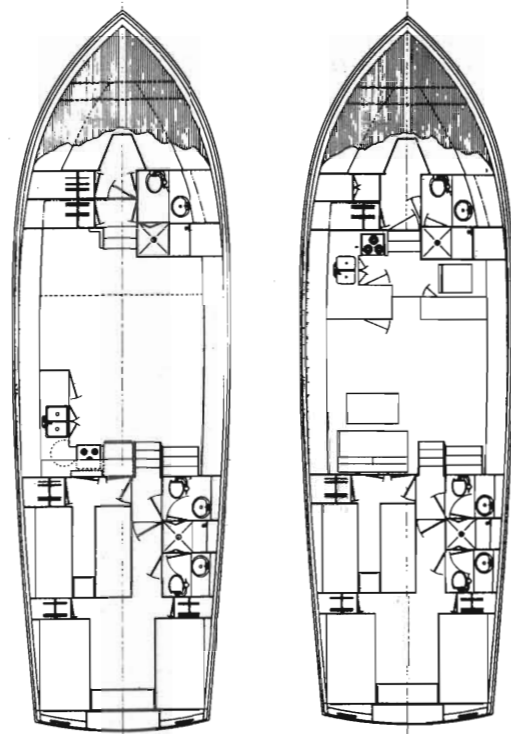
• ONTARIO, CANADA

# FIFTY FOOT MOTOR YACHT

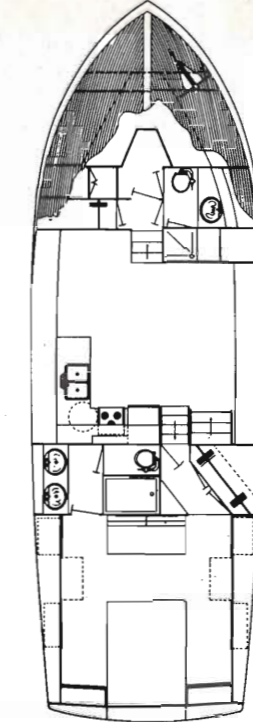


## SPECIFICATIONS:

Length .....	50'0"
Beam .....	15'3 1/2"
Draft .....	3'10"
Freeboard—Forward .....	6'5"
—Aft .....	5'9"
Height from waterline .....	13'10"
Height from bottom of cradle .....	16'7"
Weight (approx.) .....	46,000 lbs.
Headroom .....	6'5"
Fuel Capacity .....	380 Imperial Gals.      475 U.S. Gals.
Fresh Water Capacity .....	200 Imperial Gals.      250 U.S. Gals.
Bottom .....	13/16" Philippine Mahogany Plank. over 1/4" Plywood Total Thickness 1 1/8"
Frames .....	Select White Oak 1 1/8" x 5"
Topsides .....	13/16" Philippine Mahogany Plank over 1/4" Plywood
Transom .....	13/16" Philippine Mahogany Plank. over 3/8" Plywood
Speeds .....	to 22 MPH
Steering .....	Mechanical
Decks .....	Solid teak plank over laminated layers of marine plywood. Total thickness 1 5/8"



Double Aft Stateroom

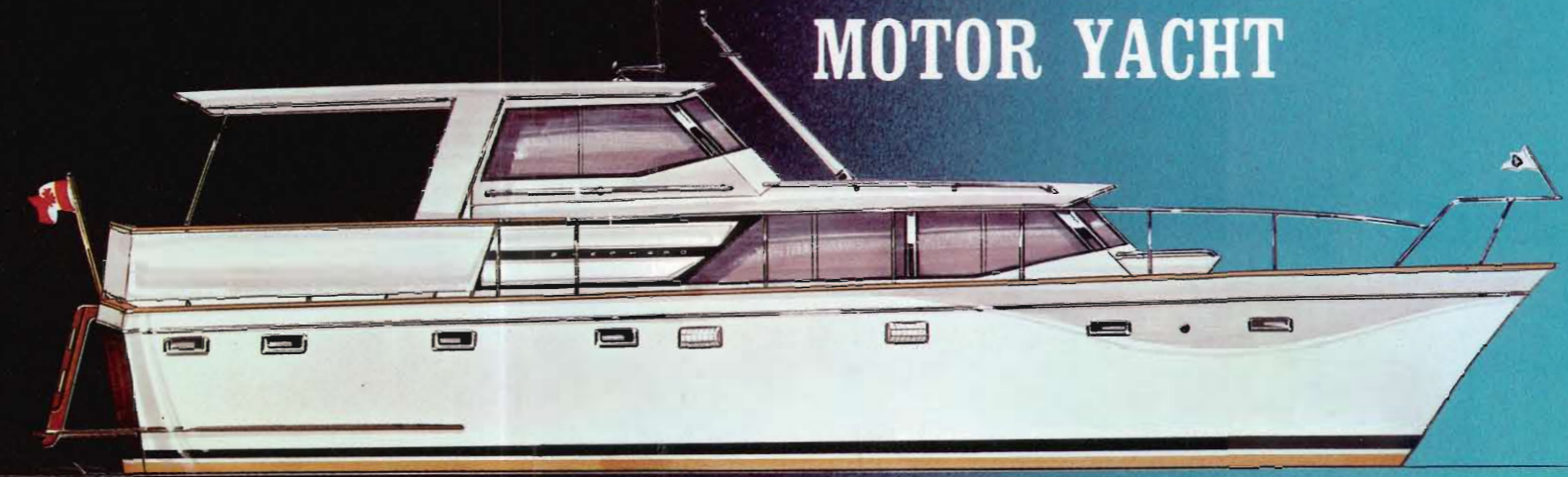


Single Aft Stateroom

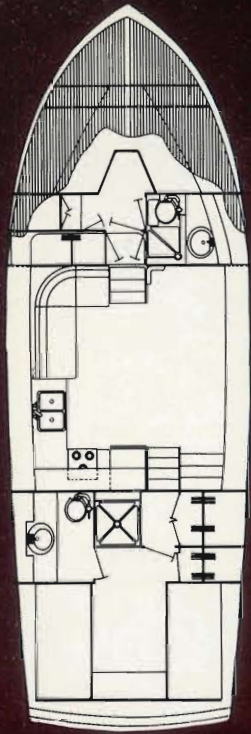
## SPECIFICATIONS:

Length .....	46'0"
Beam .....	15'3 1/2"
Draft .....	3'10"
Freeboard—Forward .....	6'5"
—Aft .....	5'9"
Height from waterline .....	13'10"
Height from bottom of cradle .....	16'10"
Weight (approx.) .....	30,000 lbs.
Headroom .....	6'5"
Fuel Capacity .....	380 Imperial Gals.      475 U.S. Gals.
Fresh Water Capacity .....	200 Imperial Gals.      250 U.S. Gals.
Bottom .....	13/16" Philippine Mahogany Plank. over 1/4" Plywood
Frames .....	Select White Oak 1 1/8" x 5"
Topsides .....	13/16" Philippine Mahogany Plank. over 1/4" Plywood
Transom .....	13/16" Philippine Mahogany Plank. over 3/8" Plywood
Speeds .....	to 25 MPH
Steering .....	Mechanical
Deck .....	Solid teak plank over laminated layers of marine plywood. Total thickness 1 5/8"

# FORTY SIX FOOT MOTOR YACHT



# FORTY ONE FOOT MOTOR YACHT



## SPECIFICATIONS:

Length .....	41'0"	Fresh Water Capacity ....	118 Imperial Gals. ....	146 U.S. Gals.
Beam .....	13'11"	Bottom .....	13/16" Philippine Mahogany Plank. over 1/4" plywood	
Draft .....	3'4"	Frames .....	Select White Oak 1 1/8" x 4 1/2"	
Freeboard—Forward .....	5'11"	Topside .....	13/16" Philippine Mahogany Plank. over 1/4" plywood	
—Aft .....	5'0"	Transom .....	13/16" Philippine Mahogany Plank. over 3/8" plywood	
Height from waterline .....	12'6"	Speeds .....	to 28 MPH	
Height from bottom of cradle .....	15'0"	Steering .....	Mechanical	
Weight (approx.) .....	21,000 lbs.	Deck .....	Solid teak plank over laminated layers of marine plywood. Total thickness 1 5/8"	
Headroom .....	6'5"			
Fuel Capacity ....	294 Imperial Gals. ....			367 U.S. Gals.